

Freshwater animal study

Answer these questions for the sample that you are examining

General

What is your animal called?

Where did you find it?

What colour is it?

Was it on its own or was it living with others of its own kind?

.....

Body Structure

How big is it? (measure it)

Has it three main parts to its body? (head, thorax & abdomen)

Has it got feelers? (antennae)

Are the antennae short or long?

Can you see its eyes?

Are there wings?

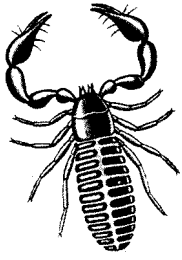
To which part of the body are they attached?

Are there any markings on the wings?

Are all the wings alike?



On a clean sheet of paper, draw a large picture of the complete animal. On another sheet, draw the wings and colour them in.



ou can't do this if your animal does not have any wings!!)

How many legs does your animal have?

Are they long or short?.....

How long is it? (measure it)

Study the legs carefully and draw them on a separate piece of paper

Defence

Does your animal have a hard or soft body?

If it is hard, has it got scales or is it all hard?

What protection has it got?.....

Do you know any of its enemies?

Movement

How does it move on the ground?

Is it able to fly?

Do you think it moves very far?

On a separate piece of paper, draw a picture of how it moves



Food

Try to discover what food it eats (decaying vegetation, other animals etc)

How could you find out if it responds to light?